

Digital duplicator

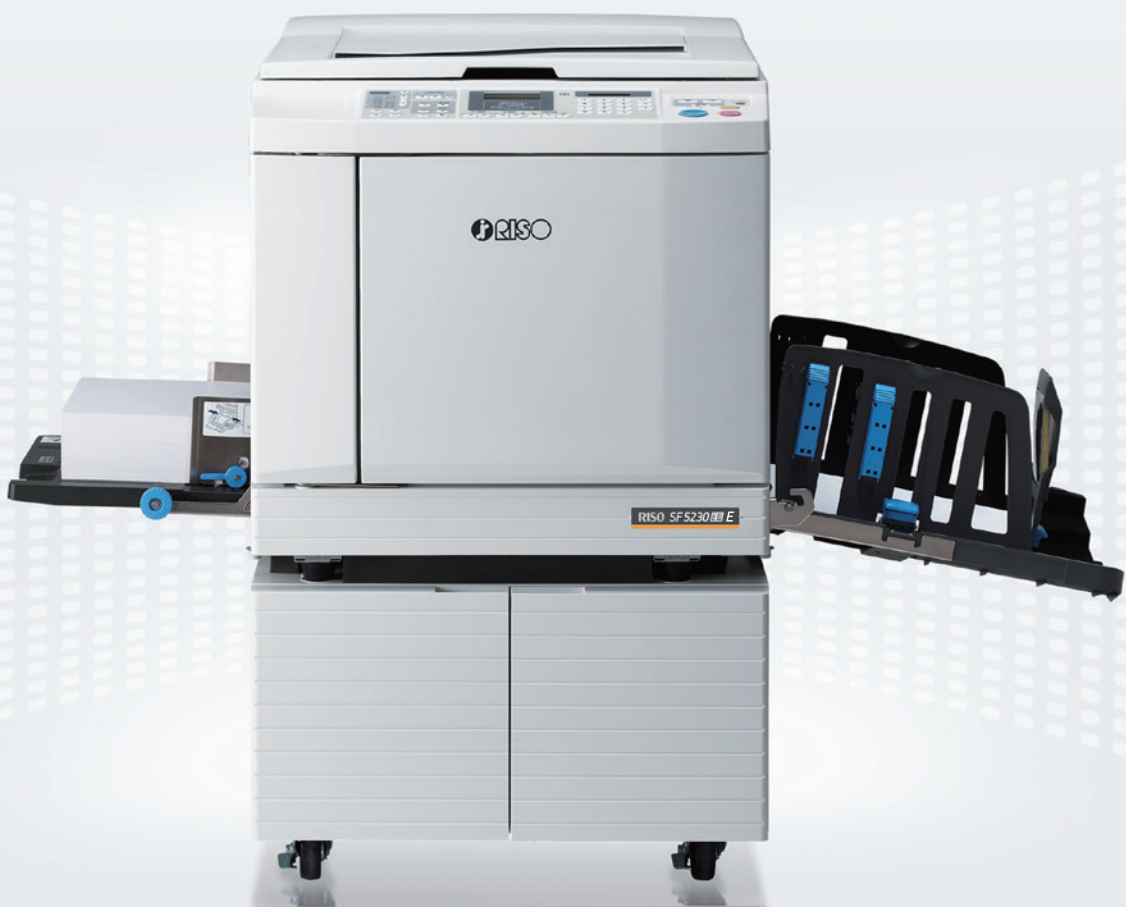
RISO SF5230 **EII** E

130 ppm High-speed printing

300x600 dpi High-resolution

B4 paper size

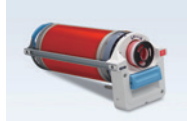
Speed Forward Edition II



An upgraded print system for use in various settings

RISO SF5230 E

Optional Accessories



RISO FII Type Drum



RISO Auto Document Feeder VII
Scans multiple documents automatically.



RISO Job Separator IV;
NIII



Card Feed Kit
Compatible with paper weight 100 gsm-400 gsm.
*Please contact a RISO sales representative for the kinds of paper that may be used.



RISO Stand D Type III
Deluxe and with doors for convenient storage with a neat appearance.



RISO Stand N Type III
Sturdy open-front stand also offers convenient storage of consumables.

- IC Card Reader Activation Kit RG
- RISO Network Kit S10
- RISO Printer driver for Macintosh
- Envelope Feed Kit
Compatible with paper weights 50 gsm to 120 gsm.

RISO iQualitySystem™



The RISO i Quality mark indicates a RISO product compatible with the RISO i Quality System.



RISO INK FII Type Color (1000 ml)



RISO MASTER FII Type
(B4: 250 sheets)



RISO INK FII Type Black (1000 ml)

Specifications

Master Making/Printing Methods		High-speed digital master-making/Fully automatic printing
Original Type		Book or sheet
Master Making Time*1	Quick Master Making mode	Approx. 18 seconds (A4, short-edge feed)
	Normal master making mode	Approx. 20 seconds (A4, short-edge feed)
Resolution	Scanning	600 dpi × 600 dpi
	Printing	300 dpi × 600 dpi, Quick Master Making mode: 300 dpi × 400 dpi
Maximum Scanning Area		297 mm × 432 mm
Print Paper Weight		46 gsm to 157 gsm
Print Paper Size		100 mm × 148 mm to 310 mm × 432 mm
Maximum Printing Area		251 mm × 357 mm
Paper Feed Tray Stacking Capacity		1000 sheets*2, stacking height of 110 mm or lower
Paper Receiving Tray Stacking Capacity		1000 sheets*2, stacking height of 110 mm or lower
Print Speed		5 levels: 60, 80, 100, 120 and 130 ppm
Print Position Adjustment		Horizontal: ±15 mm, Vertical: ±10 mm
Image Processing Mode		Line, Photo, Duo, Pencil
Print Reproduction Ratio		Zoom: (50% to 200%), 100% reduction ratio, 3 levels of enlargement (141%, 122%, 116%), 4 levels of reduction (94%, 87%, 82%, 71%)
User Interface		LCD panel
Functions		Original Scanning mode, Scanning Level, Enlargement/Reproduction, Dot Process, 2-Up, Book, Ink Saving, Quick Master Making, ADF-Semi-Auto*3, Speed, Density, Print Position, Program A/B, D-feed check, Slip sheet sorting, Job Separation*4, Idling, Confidential, Meter Display, Count Report Output, Proof, Direct Printing, USB Flash-via-Printing, Paper Memory Print, Auto Sleep Setting, Auto Power-OFF Setting, ECO mode, RISO iQuality System
PC Interface		USB2.0, Ethernet:100BASE-TX, 10BASE-T*5
Ink Supply		Full automatic (1000 ml/cartridge)
Master Supply/Disposal		Full automatic (B4: approx. 250 sheets per roll)/Disposal capacity: approx. 100 sheets
Power Source		AC 100-120 V 3.4 A, AC 220-240 V 1.6 A, 50-60 Hz
Power Consumption	Standard	Max.: 300 W, Ready: 20 W or lower, Sleep: 5 W or lower, Power-OFF: 0.5 W or lower
	Optional Accessories Connected*6	Max.: 315 W, Ready: 30 W or lower, Sleep: 10 W or lower, Power-OFF: 0.5 W or lower
Dimensions (W×D×H)	In use	1415 mm × 670 mm*7 × 1065 mm*8
	In storage	780 mm × 670 mm*7 × 1065 mm*8
Required Space (W×D×H)		1415 mm × 1240 mm × 1515 mm*8
Weight		100 kg*9

*1 Measurement value when set to 100% reproduction ratio.

*2 When using the following weight of paper: 64 gsm to 80 gsm

*3 Usable when the optional auto document feeder is installed.

*4 Usable when the optional Job Separator is installed.

*5 RISO Network Kit S10 (optional) is required for connecting to the network.

*6 When all the following optional accessories are installed, Auto Document Feeder, Job Separator, IC Card Reader.

*7 The depth does not include the stabilizers for the dedicated rack.

*8 The height includes the dedicated rack.

*9 The weight does not include the ink, master roll, and rack.

Notes: The specifications are subject to change without prior notice.

and RISO, RISO i Quality System and RISO i Quality mark are trademarks or registered trademarks of RISO KAGAKU CORPORATION in the United States and other countries. Other corporate names and/or trademarks are either registered trademarks or trademarks of each company, respectively.
Copyright ©2019 RISO KAGAKU CORPORATION. All rights reserved.

For more details please contact:



RISO KAGAKU CORPORATION
5-34-7 Shiba, Minato-ku, Tokyo 108-8385 Japan
<https://www.riso.com/>