

# Orion $\alpha$ Stream Pro for ComColor GD9630 & GD7330

**A very powerful controller designed for your high volume printing requirements and complex job.**



$\alpha$ Stream Pro is a print controller that allows to easily manage PostScript, PDF, AFP files and IPDS connection at the printer's nominal speed. PDF Jobs are natively processed by the Adobe® PDF Print Engine™, ensuring a perfect rendering management. AFP files and IPDS streams are processed by a native IPDS RIP complying with the latest level IS/3 and MO:DCA GA (Graphic Arts) defined by the AFP consortium.



Integrity



Security  
GDPR  
READY



Print Entirety



Traceability  
Reporting

## ARCHIVES

(ZIP, 7ZIP, RAR)  
Multiple files in the  
same job

## GRAPHIC'ARTS PACKAGE

SVG, SVGz, PNG,  
JPEG, JPEG 2000, GIF,  
PDF, PS, EPS, TIFF  
Single/Multi-page

## BI-DIRECTIONNAL IPDS PROTOCOL

## JOBS WITH COMPLEX IMPOSITION

## AUTOMATIC DELETION OF FILES

**UNMATCHED  
PRODUCTIVITY**  
RIPPING on the fly at  
160 A4 ppm  
82,5 A3 ppm

## IPDS CONNECTION

## SIMPLICITY AND ERGONOMY OF THE GUI

## AFP FILES

# Specifications

## Hardware configuration

### Dell Optiplex™ 5055

- Processor AMD Ryzen™ 7 Pro 1700 (8 cores/4 MB/16T/3 Ghz/65 W)
- RAM 32 GB (4 x 8 GB) DDR4 2400 Mhz
- 2 x 2.5" 500GB 7200rpm SATA Hard Drive
- Ethernet LAN 1000/100/10
- USB Restore Key
- USB License Protect Key (Dongle)

## Operating system

Windows® IoT 10

## Network connection

Ethernet: 1000 Base-T/100Base-TX/10Base-T

## Network protocols

TCP/IP  
LPR  
IPDS over TCP/IP

## Security features

### tech.researchTechnology

- Hard Disk Driver dedicated to erasing definitive files (GDPR)
- Back-up & Restore
- Automatic Installation
- Windows® Desktop Locked
- User Rights Manager

### Microsoft®

BitLocker (Activated)

## Hardware warranty

Pro Support : 3, 4 or 5 years

## Software maintenance/Up-grade

Maintenance and Up-grade : annual

## Input Data Stream

IPDS connection over TCP/IP

### AFP

PDF Single and Multi-Pages  
With and without transparency  
Level 1.3, 1.4, 1.5, 1.6, 1.7

PDF/X-1a, PDF/X-3, PDF/X-4, PDF/X-5,  
PDF/VT

### PostScript EPS, PS

level 3 Single and Multi-Pages

### Graphic'Arts

TIFF Single and Multi-Pages  
With and without transparency

### JPEG, JPEG 2000

### SVG, SVGz

### PNG

### GIF

## Screening

Multi-level stochastic frame optimized for inkjet printers

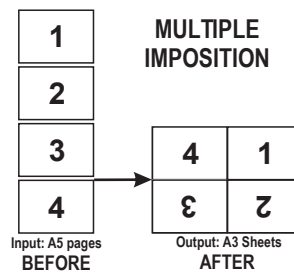
## Color management

- Linearization Curves
- ICC Profiles
- Devices Links
- Rendering Intent
- Color Mapping table for indexed or named colors (E.g. Pantone colors to CMYK, RGB or LAB color spaces)
- Passthrough color management for RGB and CMYK input colors
- Ability to define directly by object type (text, vector graphics, images), a color encountered in the stream without applying color conversion

## Imposition & Add-on data

### Management of complex imposition

Multiple Imposition of logical pages on a physical sheet (Front & Back)



- Redefine pages print order
- Pages rotation from 0° to 360° with a precision of 1/60th of degrees
- Imposition & Merge file with background or foreground (PDF, TIFF, JPEG,...) with Independent Color Management
- Ability to add 1D or 2D barcodes, containing counters with prefix, suffix and increment
- Automatic insertion of blank pages for multi-file jobs (Archives) in duplex mode with odd number of pages
- Spot mark, start and end mark of Job, start and end mark of job copies
- Flush line Insertion

## RIP exclusive features

- Full asymmetric resolution without point interpolation (E.g. 600 dpi x 300 dpi)
- Simultaneous multi-resolution (front / back) for paper shrinking compensation after drying (SHRINK fonction)
- Resolution with a floating precision (E.g. 601,203 dpi x 300,525 dpi)

## IPDS supported commands

**Text:** PTOCA1, 2, 3, 4

**Vectors:** GOCA DR/2V0, GOCA GRS3

**Images:** IM Image, IO Image, IOCA FS10, FS11, FS40, FS42, FS45

**Image containers:** JPEG, JPEG<sup>2000</sup>, GIF, PNG, TIFF mono and multi-pages with and without transparency, PDF mono and multi-pages with and without transparency

**Font:** LF1 SBSCS/DBCS, LF3 Type1 PFB and CID-KEYED font, Containers TTF, TTC and OTF

**Barcode:** BCOCA BCD1 and BCD2

Color Management Ressources:

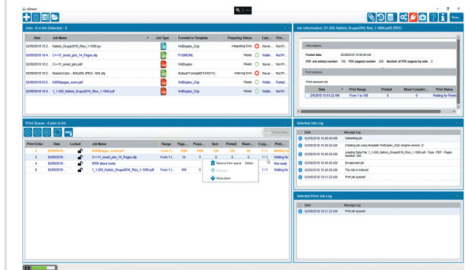
ICC profiles, Devices Links,...

**IPDS Compatibility:** Compliant to the AFP consortium IS/3 MO:DCA and MO:DCA GA

## Spooler features

- Chaining up all kind of jobs (AFP, IPDS connexion, PDF, PS, JPEG, TIFF, SVG, PNG,...), in any order
- File submission by hot folders (JDF copy command support)
- Independant setting, possible for each hot folder
- Automatic deletion of jobs with settable delays
- Support of archives (ZIP, 7ZIP, RAR) PDF, PS, EPS seen as a single job (e.g. 1000 PDF files with 2 or 3 faces per file and 200 PS files with 3, 4 or 5 faces per file)
- Full and detailed jobs history & reporting
- Automatic or manual export with ability to purge production logs simultaneously
- Managing jobs priorities in the print queue
- Recovery Mode: Automatic, semi-automatic and manual

## αStream spooler GUI



## Physical system dimensions

### WEIGHT

Max: 17,49 lb (7,93 Kg)

### DIMENSIONS

Width: 6,1" (15,4 cm)

Height: 13,8" (36,00 cm)

Depth: 10,8" (27,4 cm)

## Power supply

- Input voltage: 90-264 VAC, 47Hz/63Hz

- Input current (max): 240 W



tech.research

tech.research, AlphaStream and αStream are either registered trademarks or trademarks of TagG Informatique. Adobe PDF and PostScript are either registered trademarks or trademarks of Adobe Systems Incorporated. RISO and ComColor are either registered trademarks or trademarks of RISO KAGAKU Corporation. Microsoft, Windows and Windows 10 IoT are either registered trademarks or trademarks of Microsoft Corporation. AMD and AMD Ryzen are trademarks of Advanced Micro Devices, Inc. All other trademarks are the property of their respective owners.