

Orion α Stream Starter for ComColor GD9630 & GD7330

A controller designed for your high volume requirements.



α Stream Starter is a print controller that allows to easily manage PostScript and PDF files at the printer's nominal speed. PDF Jobs are natively processed by the Adobe® PDF Print Engine™, ensuring a perfect rendering management.



Integrity



Security
GDPR
READY



Print Entirety



Traceability
Reporting

<p>ARCHIVES (ZIP, 7ZIP, RAR) Multiple files in the same job</p>	<p>GRAPHIC'ARTS PACKAGE SVG, SVGz, PNG, JPEG, JPEG 2000, GIF, PDF, PS, EPS, TIFF Single/Multi-page</p>	<p>SIMPLICITY AND ERGONOMICS OF THE GUI</p>
<p>JOBS WITH COMPLEX IMPOSITION</p>	<p>AUTOMATIC DELETION OF FILES</p>	<p>UNMATCHED PRODUCTIVITY RIPPING on the fly at 160 A4 ppm 82,5 A3 ppm</p>

Specifications

Hardware configuration

Dell Optiplex™ 3060 SFF

- Processor Intel® Core™ i3-8300 (4 cores/8 MB/4T/3,7 GHz/65 W)
- RAM 8 GB (1 x 8 GB) DDR4 2400 MHz
- 2.5" 500GB 7200rpm SATA Hard Drive
- Ethernet LAN 1000/100/10
- USB Restore Key
- USB License Protect Key (Dongle)

Operating system

Windows® IoT 10

Network connection

Ethernet : 1000 Base-T/100Base-TX/10Base-T

Network protocols

TCP/IP
LPR

Security features

tech.researchTechnology

- Hard Disk Driver dedicated to erasing definitive files (GDPR)
- Back-up & Restore
- Automatic Installation
- Windows® Desktop Locked
- User Rights Manager

Microsoft®

BitLocker (Activated)

Hardware warranty

Basic: 1 year
Option Pro Support: 5 years

Software maintenance/Up-grade

Maintenance: 5 years
Up-grade: 5 years

Input Data Stream

PDF Single and Multi-Pages
With and without transparency
Level 1.3, 1.4, 1.5, 1.6, 1.7
PDF/X-1a, PDF/X-3, PDF/X-4, PDF/X-5,
PDF/VT

PostScript EPS, PS
level 3 Single and Multi-Pages

Graphic'Arts

TIFF Single and Multi-Pages
With and without transparency

JPEG, JPEG 2000

SVG, SVGz

PNG

GIF

Screening

Multi-level stochastic frame optimized for inkjet printers

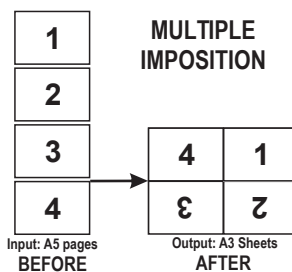
Color management

- Linearization Curves
- ICC Profiles
- Devices Links
- Rendering Intent
- Color Mapping table for indexed or named colors (E.g. Pantone colors to CMYK, RGB or LAB color spaces)
- Passthrough color management for RGB and CMYK input colors
- Ability to define directly by object type (text, vector graphics, images), a color encountered in the stream without applying color conversion

Imposition & Add-on data

Management of complex imposition

Multiple Imposition of logical pages on a physical sheet (Front & Back)



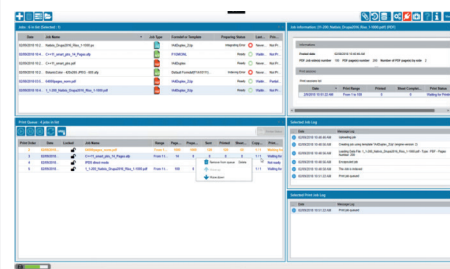
- Redefine pages print order
- Pages rotation from 0° to 360° with a precision of 1/60th of degrees
- Imposition & Merge file with background or foreground (PDF, TIFF, JPEG,...) with Independent Color Management
- Ability to add 1D or 2D barcodes, containing counters with prefix, suffix and increment
- Automatic insertion of blank pages for multi-file jobs (Archives) in duplex mode with odd number of pages
- Spot mark, start and end mark of job, start and end mark of job copies
- Flush line Insertion

RIP exclusive features

- Full asymmetric resolution without point interpolation (E.g. 600 dpi x 300 dpi)
- Simultaneous multi-resolution (front / back) for paper shrinking compensation after drying (SHRINK fonction)
- Resolution with a floating precision (E.g. 601,203 dpi x 300,525 dpi)

Spooler features

- Chaining up all kind of jobs (PDF, PS, JPEG, TIFF, SVG,...), in any order
 - File submission by hot folders (JDF copy command support)
 - Independent setting, possible for each hot folder
 - Automatic deletion of jobs with settable delays
 - Support of archives (ZIP, 7ZIP, RAR) PDF, PS, EPS seen as a single job (e.g. 1000 PDF files with 2 or 3 faces per file and 200 PS files with 3, 4 or 5 faces per file)
 - Full and detailed jobs history & reporting
 - Automatic or manual export with ability to purge production logs simultaneously
 - Managing jobs priorities in the print queue
 - Recovery Mode: Automatic, semi-automatic and manual
- αStream spooler GUI



Physical system dimensions

WEIGHT

Max: 11,57 lb (5,26 Kg)

DIMENSIONS

Width: 3,7" (9,26 cm)
Height: 11,4" (29,00 cm)
Depth: 11,5" (29,20 cm)

Power supply

- Input voltage: 90-264 VAC, 47 Hz/63Hz
- Input current (max): 200 W



tech.research

tech.research, AlphaStream and αStream are either registered trademarks or trademarks of TagG Informatique. Adobe, Adobe PDF and PostScript are either registered trademarks or trademarks of Adobe Systems Incorporated. RISO and ComColor are either registered trademarks or trademarks of RISO KAGAKU Corporation. Microsoft, Windows and Windows 10 IoT are either registered trademarks or trademarks of Microsoft Corporation. AMD and AMD Ryzen are trademarks of Advanced Micro Devices, Inc. All other trademarks are the property of their respective owners.