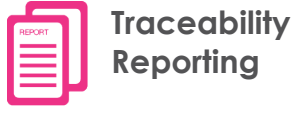


**Orion α Stream Pro
for VALEZUS T2100**

A very powerful controller designed for your high volume printing requirements and complex job.



α Stream Pro is a print controller that allows to easily manage PostScript, PDF, AFP files and IPDS connection at the printer nominal speed. PDF Jobs are natively processed by the Adobe® PDF Print Engine™, ensuring a perfect rendering management. AFP files and IPDS streams are processed by a native IPDS RIP complying with the latest level IS/3 and MO:DCA GA (Graphic Arts) defined by the AFP consortium.



ARCHIVES
(ZIP, 7ZIP, RAR)
Multiple files in the same job

GRAPHIC'ARTS PACKAGE
SVG, SVGz, PNG, JPEG, JPEG 2000, GIF, PDF, PS, EPS, TIFF
Mono/Multi-page

BI-DIRECTIONAL IPDS PROTOCOL

JOBS WITH COMPLEX IMPOSITION

AUTOMATIC DELETION OF FILES

UNMATCHED PRODUCTIVITY
RIPPING on the fly at
160 A4 ppm
82,5 A3 ppm

IPDS CONNECTION

SIMPLICITY AND ERGONOMY OF THE GUI

AFP FILES

Specifications

Hardware configuration

Dell Optiplex™ T5820

- Processor Intel Xeon W-2155 (10 cores/4 MB/3,3 Ghz/4,5 Ghz turbo/140 W)
- RAM 32 GB (4 x 8 GB) DDR4 2666 Mhz
- 2 x 2.5" 500GB 7200rpm SATA Hard Drive
- Ethernet LAN 1000/100/10
- USB Restore Key
- USB License Protect Key (Dongle)

Operating system

Windows® IoT 10

Network connection

Ethernet: 1000 Base-T/100Base-TX/10Base-T

Network protocols

TCP/IP
LPR
IPDS over TCP/IP

Security features

tech.researchTechnology

- Hard Disk Driver dedicated to erasing definitive files (GDPR)
- Back-up & Restore
- Automatic Installation
- Windows® Desktop Locked
- User Rights Manager

Microsoft®

BitLocker (Activated)

Hardware warranty

Pro Support : 3, 4 or 5 years

Software maintenance/Up-grade

Maintenance and Up-grade : annual

Input Data Stream

IPDS connection over TCP/IP

AFP

PDF Single and Multi-Pages

With and without transparency

Level 1.3, 1.4, 1.5, 1.6, 1.7

PDF/X-1a, PDF/X-3, PDF/X-4, PDF/X-5, PDF/VT

PostScript EPS, PS

level 3 Single and Multi-Pages

Graphic'Arts

TIFF Single and Multi-Pages

With and without transparency

JPEG, JPEG 2000

SVG, SVGz

PNG

GIF

Screening

Multi-level stochastic frame optimized for inkjet printers

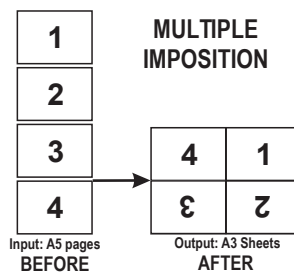
Color management

- Linearization Curves
- ICC Profiles
- Devices Links
- Rendering Intent
- Color Mapping table for indexed or named colors (E.g. Pantone colors to CMYK, RGB or LAB color spaces)
- Passthrough color management for RGB and CMYK input colors
- Ability to define directly by object type (text, vector graphics, images), a color encountered in the stream without applying color conversion

Imposition & Add-on data

Management of complex imposition

Multiple Imposition of logical pages on a physical sheet (Front & Back)



- Redefine pages print order
- Pages rotation from 0° to 360° with a precision of 1/60th of degrees
- Imposition & Merge file with background or foreground (PDF, TIFF, JPEG,...) with Independent Color Management
- Ability to add 1D or 2D barcodes, containing counters with prefix, suffix and increment
- Automatic insertion of blank pages for multi-file jobs (Archives) in duplex mode with odd number of pages
- Spot mark, start and end mark of Job, start and end mark of job copies

RIP exclusive features

- Full asymmetric resolution without point interpolation (E.g. 600 dpi x 300 dpi)
- Simultaneous multi-resolution (front / back) for paper shrinking compensation after drying (SHRINK fonction)
- Resolution with a floating precision (E.g. 601,203 dpi x 300,525 dpi)

IPDS supported commands

Text: PTOCA1, 2, 3, 4

Vectors: GOCA DR/2V0, GOCA GRS3

Images: IM Image, IO Image, IOCA FS10, FS11, FS40, FS42, FS45

Image containers: JPEG, JPEG²⁰⁰⁰, GIF, PNG, TIFF mono and multi-pages with and without transparency, PDF mono and multi-pages with and without transparency

Font: LF1 SBCS/DBCS, LF3 Type1 PFB and CID-KEYED font, Containers TTF, TTC and OTF

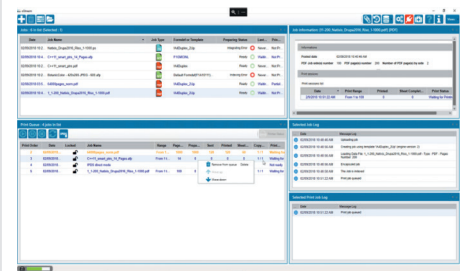
Barcode: BCOCA BCD1 and BCD2 Color Management Resources: ICC profiles, Devices Links,...

IPDS Compatibility: Compliant to the AFP consortium IS/3 MO:DCA and MO:DCA GA

Spooler features

- Chaining up all kind of jobs (AFP, IPDS connexion, PDF, PS, JPEG, TIFF, SVG, PNG,...), in any order
- File submission by hot folders (JDF copy command support)
- Independant setting, possible for each hot folder
- Automatic deletion of jobs with settable delays
- Support of archives (ZIP, 7ZIP, RAR) PDF, PS, EPS seen as a single job (e.g. 1000 PDF files with 2 or 3 faces per file and 200 PS files with 3, 4 or 5 faces per file)
- Full and detailed jobs history & reporting
- Automatic or manual export with ability to purge production logs simultaneously
- Managing jobs priorities in the print queue
- Recovery Mode: Automatic, semi-automatic and manual

αStream spooler GUI



Physical system dimensions

WEIGHT

Max: 32,00 lb (15,40 Kg)

DIMENSIONS

Width: 6,80" (17,65 cm)

Height: 16,30" (41,79 cm)

Depth: 19,11" (51,83 cm)

Power supply

- Input voltage: 100-240 VAC
- Input current (max): 425 W