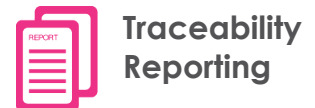


**Orion α Stream Starter
for VALEZUS T2100**

A controller designed for your high volume printing requirements.



α Stream Starter is a print controller that allows to easily manage PostScript and PDF files at the printer's nominal speed. PDF Jobs are natively processed by the Adobe® PDF Print Engine™, ensuring a perfect rendering management.



<p>ARCHIVES (ZIP, 7ZIP, RAR) Multiple files in the same job</p>	<p>GRAPHIC'ARTS PACKAGE SVG, SVGz, PNG, JPEG, JPEG 2000, GIF, PDF, PS, EPS, TIFF Single/Multi-page</p>	<p>SIMPLICITY AND ERGONOMY OF THE GUI</p>
<p>JOBS WITH COMPLEX IMPOSITION</p>	<p>AUTOMATIC DELETION OF FILES</p>	<p>UNMATCHED PRODUCTIVITY RIPPING on the fly at 320 A4 ppm 175 A3 ppm</p>

Specifications

Hardware configuration

Dell Precision 3430

- Processor Intel Core i7-8700 (6 cores/12 MB/12T/3,2 GHz)
- RAM 32 GB (2 x 16 GB) 2 666 MHz
- 2.5" 500GB 7200rpm SATA Hard Drive
- Ethernet LAN 1000/100/10
- USB Restore Key
- USB License Protect Key (Dongle)
- Dell Touchscreen 24" (tactile)

Operating system

Windows® IoT 10

Network connection

Ethernet : 1000 Base-T/100Base-TX/10Base-T

Network protocols

TCP/IP
LPR

Security features

tech.researchTechnology

- Hard Disk Driver dedicated to erasing definitive files (GDPR)
- Back-up & Restore
- Automatic Installation
- Windows® Desktop Locked
- User Rights Manager

Microsoft®

BitLocker (Activated)

Hardware warranty

Basic: 1 year
Option Pro Support: 5 years

Software maintenance/Up-grade

Maintenance: 5 years
Up-grade: 5 years

Input Data Stream

PDF Single and Multi-Pages
With and without transparency
Level 1.3, 1.4, 1.5, 1.6, 1.7
PDF/X-1a, PDF/X-3, PDF/X-4, PDF/X-5,
PDF/VT

PostScript EPS, PS
level 3 Single and Multi-Pages

Graphic' Arts

TIFF Single and Multi-Pages
With and without transparency

JPEG, JPEG 2000

SVG, SVGz

PNG

Screening

Multi-level stochastic frame optimized for inkjet printers

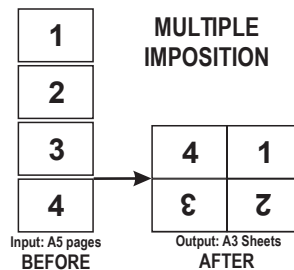
Color management

- Linearization Curves
- ICC Profiles
- Devices Links
- Rendering Intent
- Color Mapping table for indexed or named colors (E.g. Pantone colors to CMYK, RGB or LAB color spaces)
- Passthrough color management for RGB and CMYK input colors
- Ability to define directly by object type (text, vector graphics, images), a color encountered in the stream without applying color conversion

Imposition & Add-on data

Management of complex imposition

Multiple Imposition of logical pages on a physical sheet (Front & Back)



- Redefine pages print order
- Pages rotation from 0° to 360° with a precision of 1/60th of degrees
- Imposition & Merge file with background or foreground (PDF, TIFF, JPEG,...) with Independent Color Management
- Ability to add 1D or 2D barcodes, containing counters with prefix, suffix and increment
- Automatic insertion of blank pages for multi-file jobs (Archives) in duplex mode with odd number of pages
- Spot mark, start and end mark of Job, start and end mark of job copies

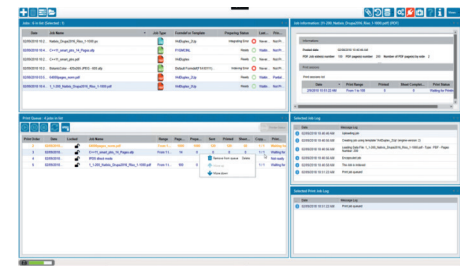
RIP exclusive features

- Full asymmetric resolution without point interpolation (E.g. 600 dpi x 300 dpi)
- Simultaneous multi-resolution (front / back) for paper shrinking compensation after drying (SHRINK fonction)
- Resolution with a floating precision (E.g. 601,203 dpi x 300,525 dpi)

Spooler features

- Chaining up all kind of jobs (PDF, PS, JPEG, TIFF, SVG,...), in any order
- File submission by hot folders (JDF copy command support)
- Independant setting, possible for each hot folder
- Automatic deletion of jobs with settable delays
- Support of archives (ZIP, 7ZIP, RAR) PDF, PS, EPS seen as a single job (e.g. 1000 PDF files with 2 or 3 faces per file and 200 PS files with 3, 4 or 5 faces per file)
- Full and detailed jobs history & reporting
- Automatic or manual export with ability to purge production logs simultaneously
- Managing jobs priorities in the print queue
- Recovery Mode: Automatic, semi-automatic and manual

- **αStream** spooler GUI



Physical system dimensions

WEIGHT

Max: 17,49 lb (7,93 Kg)

DIMENSIONS

Width: 6,1" (15,4 cm)
Height: 13,8" (35,00 cm)
Depth: 10,8" (27,40 cm)

Power supply

- Input voltage: 90-264 VAC, 47 Hz/63Hz
- Input current (max): 240 W